

## **VI. Multifamily Prepayment**





## USDA Section 515 Rural Rental Housing Loan Prepayments FY 2008

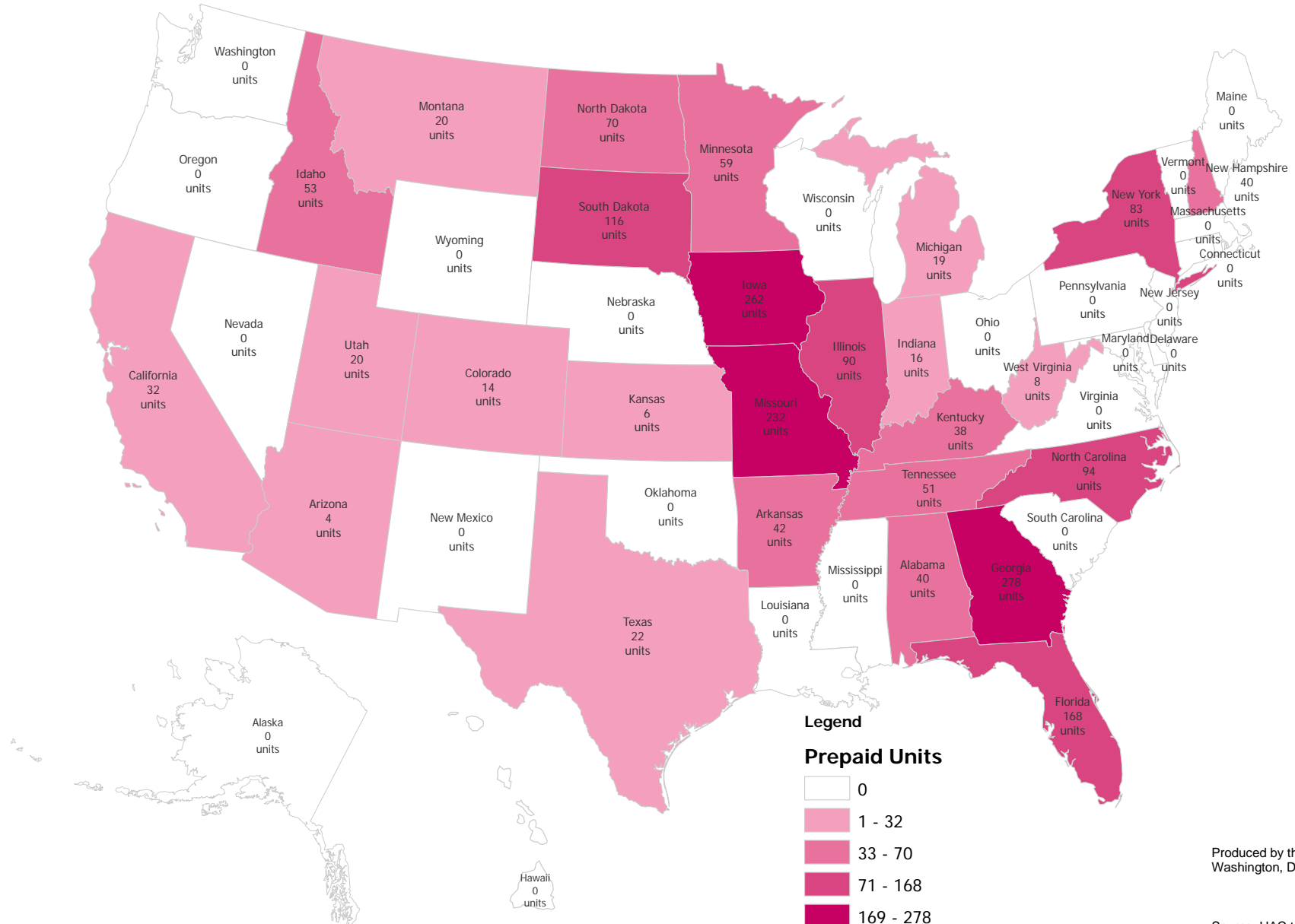
State	Loan Prepayments 2008	
	Properties	Units
Alabama	1	40
Alaska	0	0
Arizona	1	4
Arkansas	2	42
California	3	32
Colorado	1	14
Connecticut	0	0
Delaware	0	0
Florida	5	168
Georgia	9	278
Hawaii	0	0
Idaho	1	53
Illinois	7	90
Indiana	1	16
Iowa	20	262
Kansas	1	6
Kentucky	2	38
Louisiana	0	0
Maine	0	0
Maryland	0	0
Massachusetts	0	0
Michigan	3	19
Minnesota	4	59
Mississippi	0	0
Missouri	10	232
Montana	1	20
Nebraska	0	0
Nevada	0	0
New Hampshire	1	40
New Jersey	0	0
New Mexico	0	0
New York	1	83
North Carolina	2	94
North Dakota	8	70
Ohio	0	0
Oklahoma	0	0
Oregon	0	0
Pennsylvania	0	0
Rhode Island	0	0
South Carolina	0	0
South Dakota	13	116
Tennessee	2	51
Texas	1	22
Utah	1	20
Vermont	0	0
Virginia	0	0
Washington	0	0
West Virginia	2	8
Wisconsin	0	0
Wyoming	0	0
<b>Totals</b>	<b>103</b>	<b>1,877</b>

Source: HAC Tabulations of RD Data



# USDA Section 515 Rental Housing Prepayments FY2008

## Section 515 Prepaid Units



### Legend

### Prepaid Units

- 0
- 1 - 32
- 33 - 70
- 71 - 168
- 169 - 278

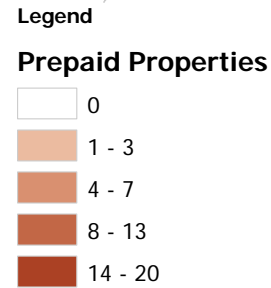
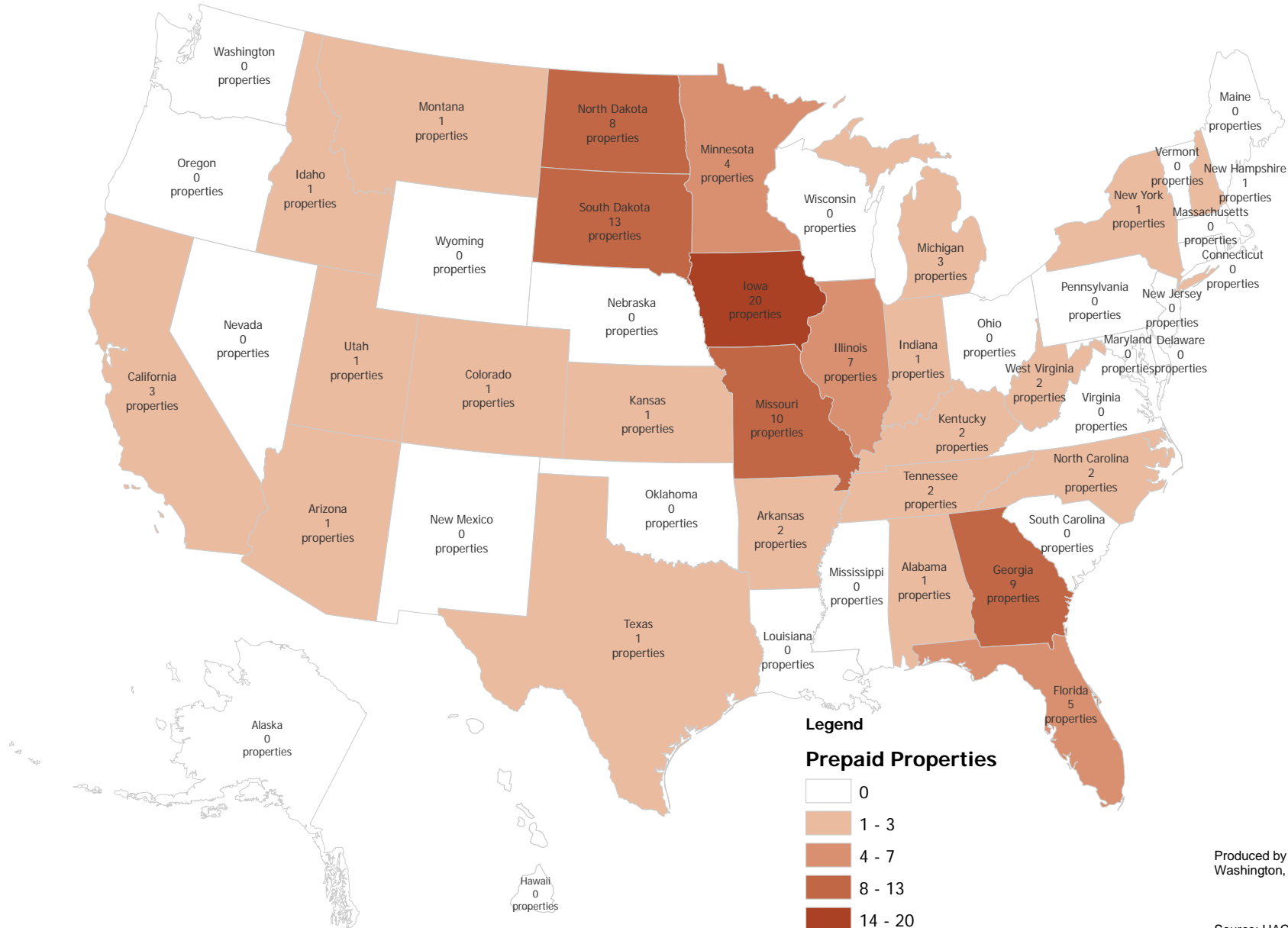
Produced by the Housing Assistance Council  
Washington, DC

Source: HAC tabulations of USDA data



# USDA Section 515 Rental Housing Prepayments FY2008

## Section 515 Prepaid Properties



Produced by the Housing Assistance Council  
Washington, DC

Source: HAC tabulations of USDA data



## USDA Section 515 Rural Rental Housing Loan Prepayments FY 2001- FY 2008

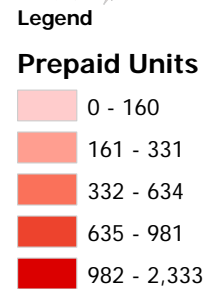
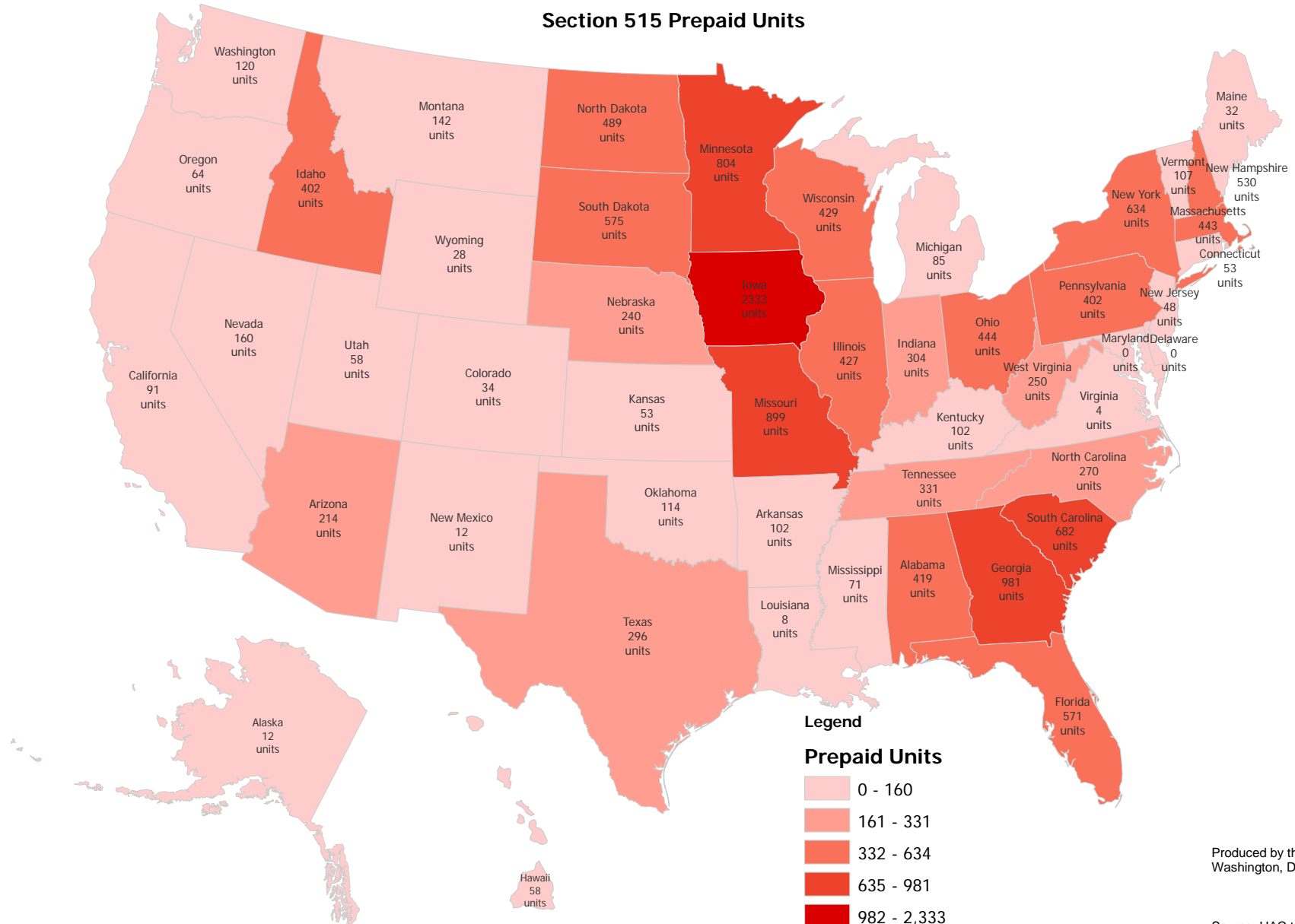
State	Prepayments 2001-2008	
	Total Properties	Total Units
Alabama	16	419
Alaska	1	12
Arizona	8	214
Arkansas	5	102
California	7	91
Colorado	2	34
Connecticut	3	53
Delaware	0	0
Florida	14	571
Georgia	36	981
Hawaii	1	58
Idaho	26	402
Illinois	37	427
Indiana	14	304
Iowa	214	2,333
Kansas	7	53
Kentucky	5	102
Louisiana	2	8
Maine	3	32
Maryland	0	0
Massachusetts	12	443
Michigan	5	85
Minnesota	61	804
Mississippi	3	71
Missouri	55	899
Montana	10	142
Nebraska	21	240
Nevada	7	160
New Hampshire	12	530
New Jersey	1	48
New Mexico	1	12
New York	15	634
North Carolina	11	270
North Dakota	55	489
Ohio	14	444
Oklahoma	4	114
Oregon	3	64
Pennsylvania	15	402
Rhode Island	1	4
South Carolina	19	682
South Dakota	76	575
Tennessee	11	331
Texas	11	296
Utah	6	58
Vermont	3	107
Virginia	1	4
Washington	4	120
West Virginia	14	250
Wisconsin	27	429
Wyoming	1	28
<b>Totals</b>	<b>880</b>	<b>14,931</b>

Source: HAC Tabulations of RD Data



# USDA Section 515 Rental Housing Prepayments FY2001 - FY2008

Section 515 Prepaid Units



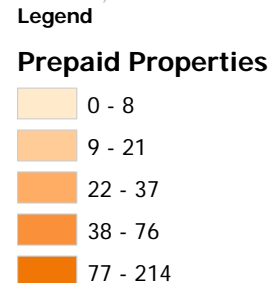
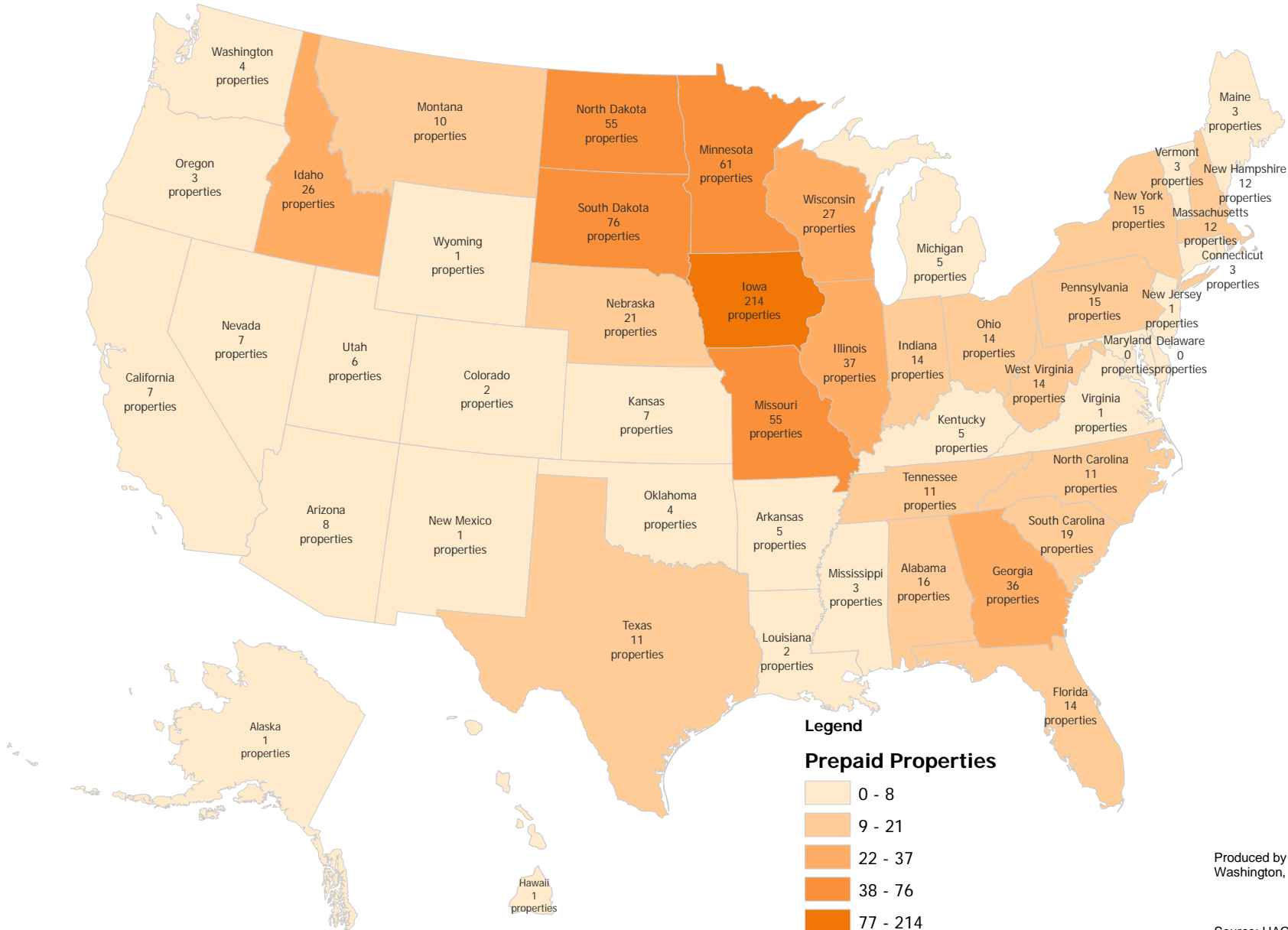
Produced by the Housing Assistance Council  
Washington, DC

Source: HAC tabulations of USDA data



# USDA Section 515 Rental Housing Prepayments FY2001 - FY2008

## Section 515 Prepaid Properties

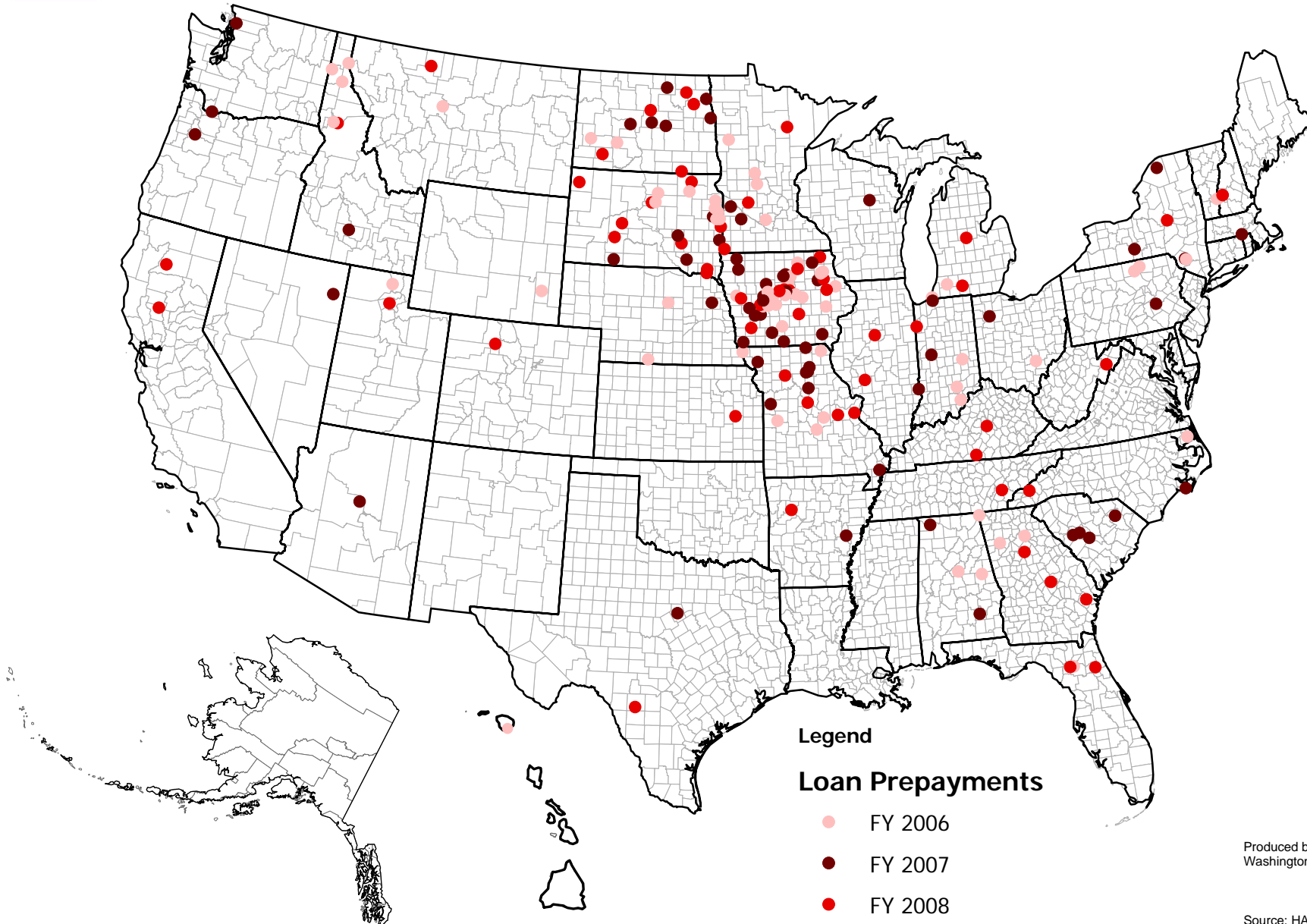


Produced by the Housing Assistance Council  
Washington, DC

Source: HAC tabulations of USDA data



# USDA Section 515 Loan Prepayments, FY 2006 - FY 2008



Produced by the Housing Assistance Council  
Washington, DC

Source: HAC Tabulations of USDA Data



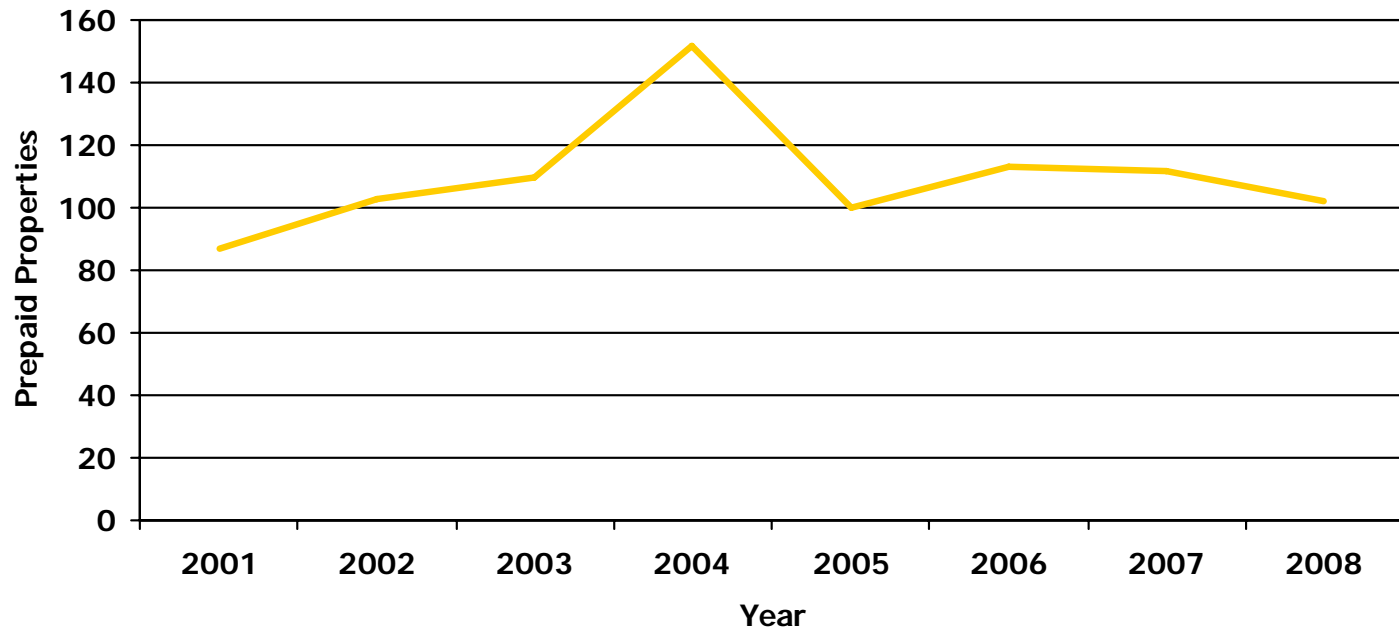
USDA Section 515 Rural Rental Housing Loan Prepayments FY 2001- FY 2008

Fiscal Year	Loan Prepayments	
	Total Properties	Total Units
2001	87	1,197
2002	103	1,562
2003	110	1,705
2004	152	2,779
2005	100	1,812
2006	113	2,189
2007	112	1,810
2008	103	1,877
<b>Totals</b>	<b>880</b>	<b>14,931</b>

Source: HAC Tabulations of RD Data



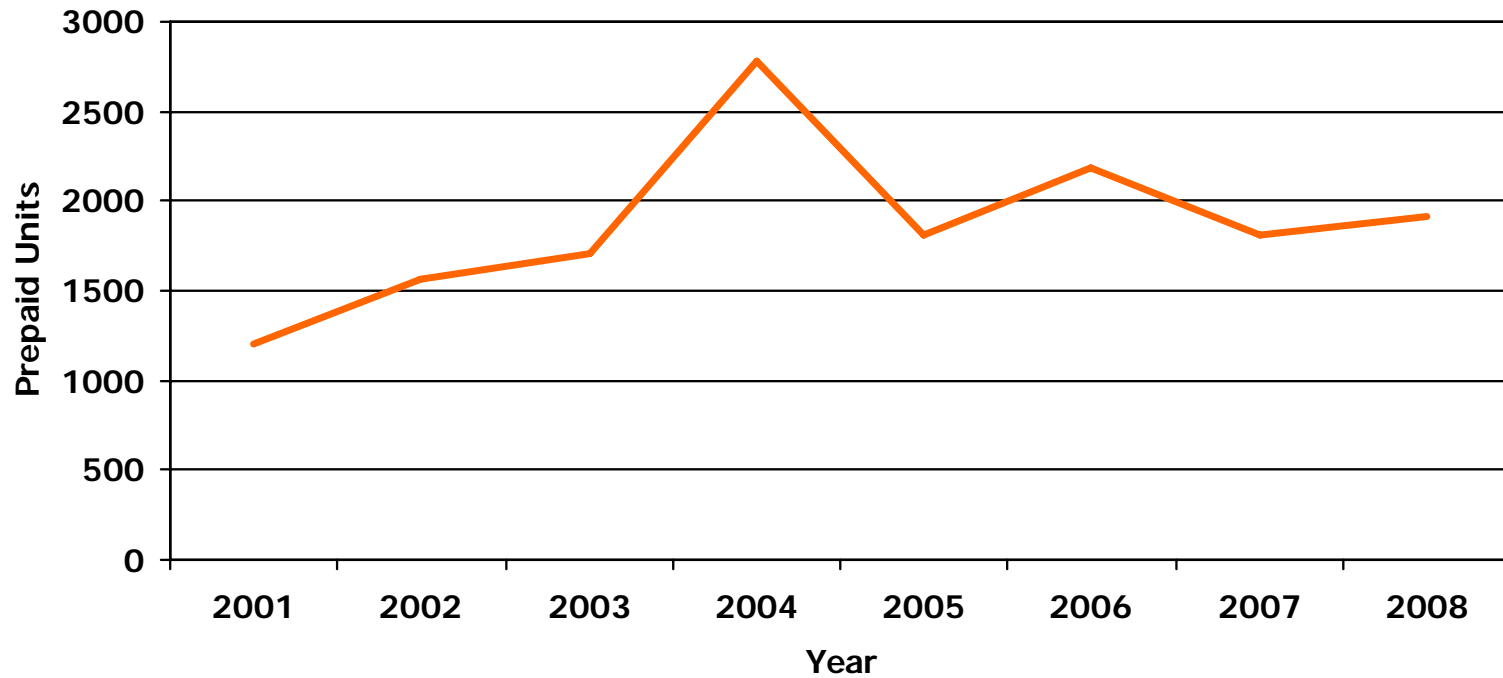
## USDA Section 515 Prepaid Rental Properties, FY2001-FY2008



— Prepaid Properties



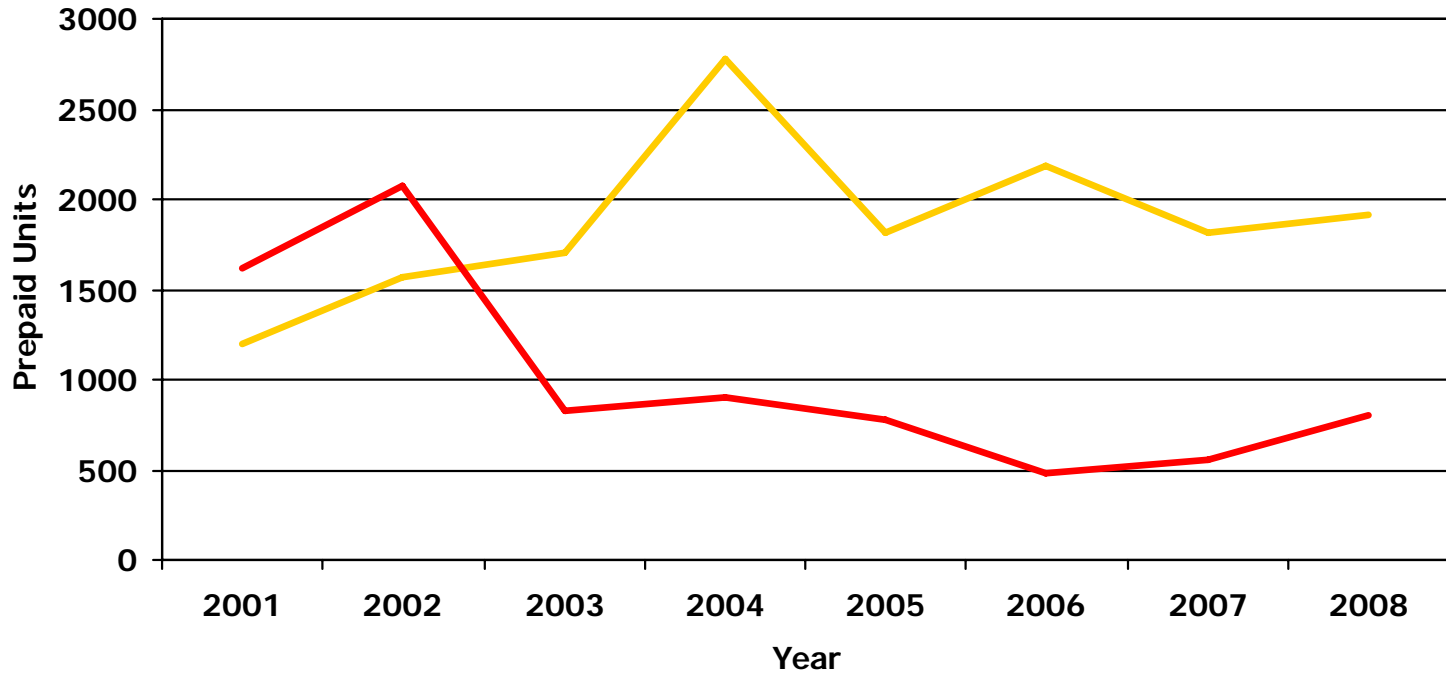
## USDA Section 515 Prepaid Rental Units, FY2001-FY2008



— Prepaid Rental Units



## USDA Section 515 Rental Housing Production and Prepayment FY2001-FY2008



— Prepaid Section 515 Rental Units — Newly Constructed Section 515 Rental Units