

# creative placemaking 101



A top-down view of a desk workspace. A laptop is partially visible on the left. The desk is covered with several sheets of yellow sticky notes, some with hand-drawn diagrams and sketches. A black pen lies on one of the sticky notes. There are also several white papers scattered around, some with printed text and diagrams. The overall scene suggests a creative or planning session.

# agenda

what?

how?

call for participants

questions



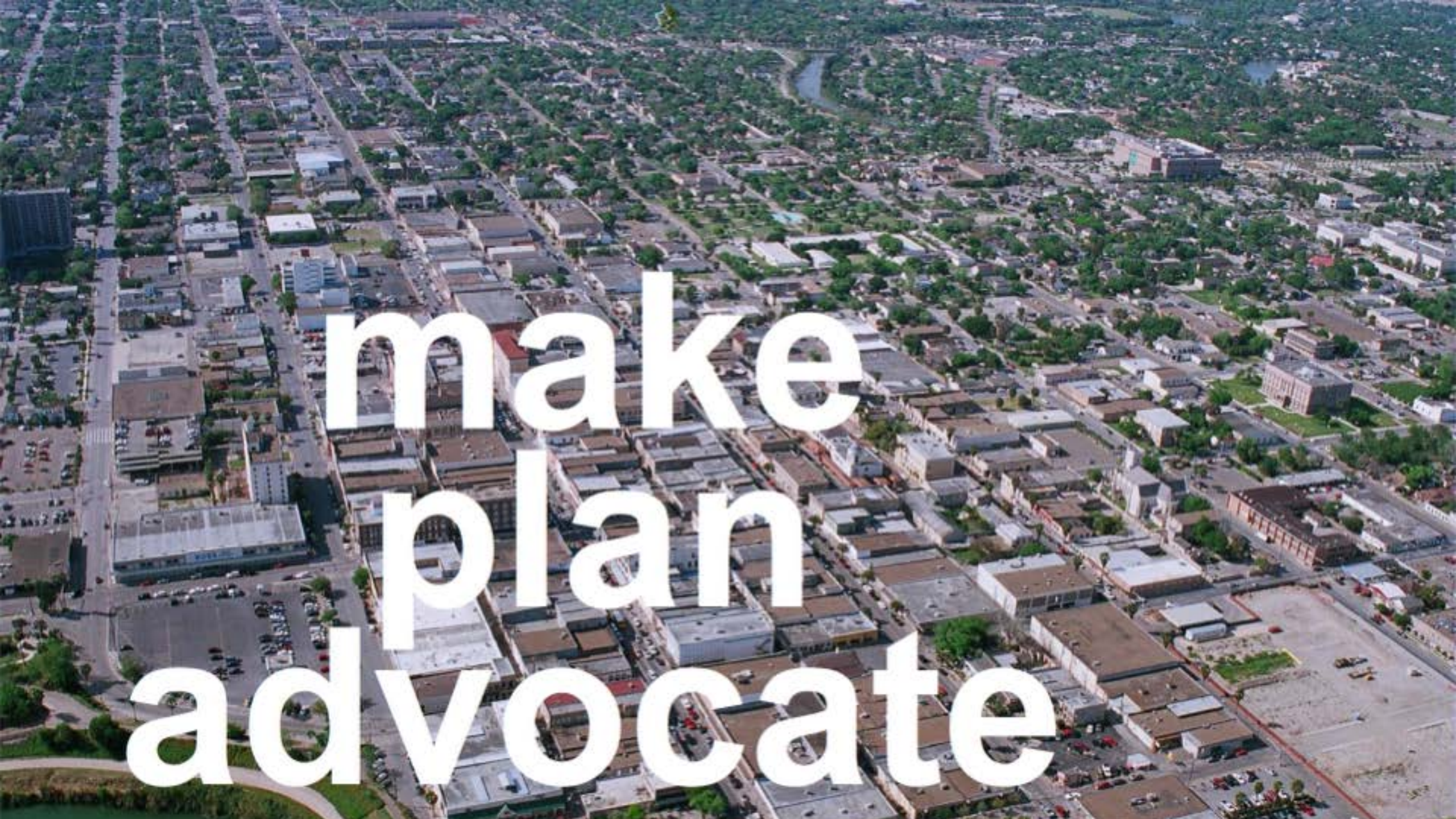
# call for participants

submission deadline 11:59pm, March 10th

applicants notified by March 30th







make  
plan  
advocate

advocate





plan





make



# Our Town Knowledge-Building Grant





community  
development  
organizations  
+  
artists



Member of Excellence  
MEMBER OF EXCELLENCE  
Janita Mendenhall

Member of Excellence  
MEMBER OF EXCELLENCE  
Dorcas Smith Todd

Member of Excellence  
MEMBER OF EXCELLENCE  
Loni Nuff Jones

Member of Excellence  
MEMBER OF EXCELLENCE  
Lillian Martin

Member of Excellence  
MEMBER OF EXCELLENCE  
Chadler Williams

Member of Excellence  
MEMBER OF EXCELLENCE  
Teresa Clark Bennett



# creative placemaking



community  
development tool



art  
culture  
community

A combine harvester is shown at night, illuminated from within. The machine features several glowing panels with artwork. The most prominent is a large panel on the upper body depicting a stylized yellow corn cob with a red tassel and a white beard-like shape below it. Below this, there are smaller panels on the side and front, each showing a colorful, abstract design. The harvester is positioned in a field, with a dark horizon and a twilight sky in the background.

# Wormfarm's Roadside Culture Stands







HOME  
GROWN

ROADSIDE CULTURE STAND

THINK

# Kirkbride Arts & History Weekend

Honoring the past & future of the Fergus Falls State Hospital

For a full schedule of events visit [www.imaginefergusfalls.com](http://www.imaginefergusfalls.com) or pick up a brochure at Springboard for the Arts and other partner locations

# 2015



## WALKING THE TIGHTROPE

an original theater production



- SPONSORS:**
- ArtPlace America
  - The Mandag Foundation
  - McKnight Foundation
  - Lake Region Arts Council
- Plus* Kirkbride Idea Exchange, featuring Robert Kirkbride  
Community Picnic  
Hinge Artist Exhibits and Installations  
Building and Cemetery Tours  
Film Screenings  
Ceremony of Remembrance  
Bike Ride for Mental Health
- PARTNERS:**
- Springboard for the Arts
  - Friends of the Kirkbride
  - City of Fergus Falls
  - Other Tall County Historical Society
  - A Center for the Arts
  - Kadidatz Galleries
  - Self-Advocates MN NW
  - Friends of the FFSH Cemetery
  - PartnerSHIP 4 Health

This activity is made possible by voters of Minnesota through grants from the Lake Region Arts Council, thanks to a legislative appropriation from the Arts & Cultural Heritage fund.



# Imagine Fergus Falls Springboard for the Arts





A group of people in a large room, many with their arms raised and hands clasped together, suggesting a community event or dance. The room has large windows and a wooden floor. The text is overlaid on the image.

# Letcher County Culture Hub

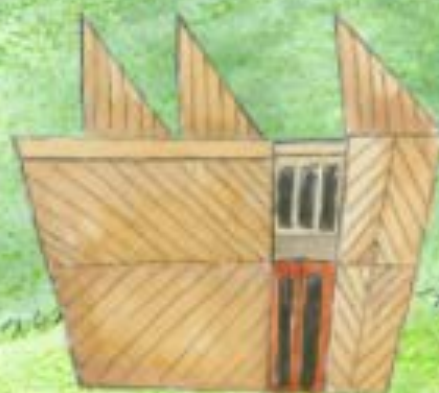
Appalshop and Lafayette College's Economic  
Empowerment & Global Learning Project



# Letcher County Culture

BUILDING A NATIONAL MODEL OF GRASSROOTS ECONOMIC DEVELOPMENT

## Hub







**WMMT FM 88.7**  
**MOUNTAIN COMMUNITY RADIO**

The QRS

Cavaliers



**activating  
vacancy**

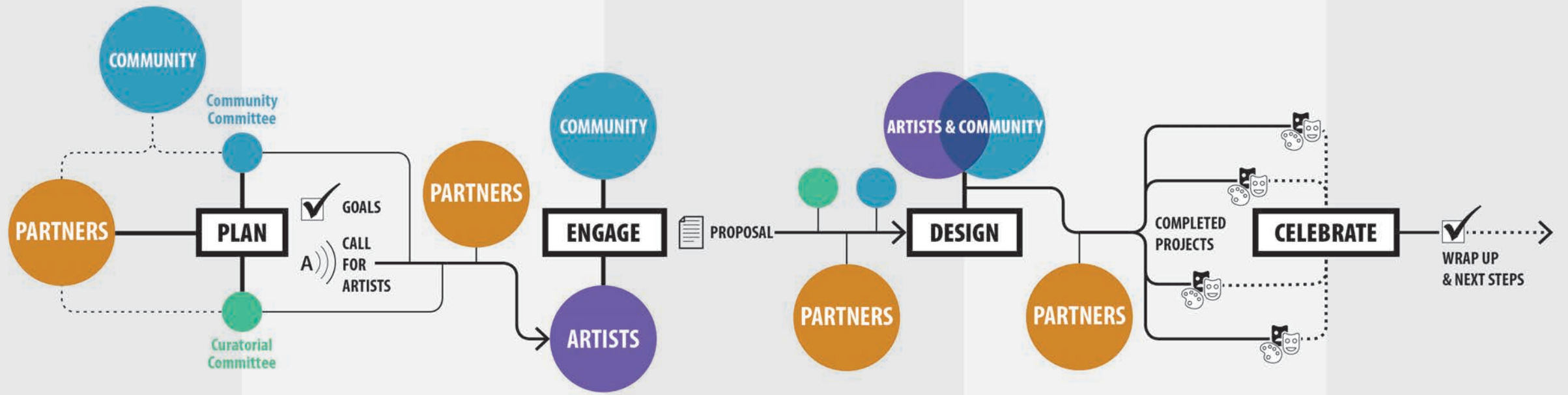


vibrancy + strength



equity  
inclusion  
co-creation  
capacity building  
geography

# ACTIVATING VACANCY



Building Partnerships

Envisioning the Project

Understanding the Community

Making It Happen

Celebrating the Work

**let's walk through  
the process**



**building  
partnerships**

A photograph of two men leaning over a table, focused on a project. The man on the left has dark hair and a beard, wearing a dark polo shirt. The man on the right has a very full, dark beard and is also wearing a dark polo shirt. They are surrounded by papers, orange string, and other materials. In the background, other people are visible, including one in a grey shirt and another in a white shirt and tie. The scene is brightly lit, possibly from a window on the right.

# envisioning the project

If I do this  
I'll have 3 tabs  
out of my body  
GOD cabin



# engaging the community











making it happen



**celebrating the work**



challenges







outcomes



view the AV project guide at  
<http://bit.ly/2lyAaCp>



**call for  
participants**




applicants



partnership  
trainings



requirements



deadline  
march 10th  
11:59PM EST

for more information visit <http://bit.ly/2kRIbDk>  
apply at <http://bit.ly/2kRJ6Uc>



# future learning opportunities

Second Webinar (late March)  
July Issue of Rural Voices <http://bit.ly/2iu0QnW>  
Further HAC learning opportunities





for more information visit:

<http://bit.ly/2kmbU7d>

contact

[michaela@bcworkshop.org](mailto:michaela@bcworkshop.org)

[stsugg@email.wm.edu](mailto:stsugg@email.wm.edu)