



**USDA RURAL HOUSING PROGRAM HISTORIC ACTIVITY REPORT
(SELECTED PROGRAMS)**

Units Funded and Dollars Obligated Since Program Inception Through Fiscal Year (FY) 2018

Programs Which Construct, Purchase, or Repair Rural Housing Units

Program	Units (a)	Dollars (b)
Section 502 Direct Homeownership Loans (Since FY 1950)	2,174,232	74,583,810,821
Section 502 Guaranteed Homeownership Loans (Since FY 1977)	1,814,727	\$222,933,105,001
Section 504 VLI Home Rehabilitation Loans (Since FY 1950)	195,372	\$894,457,353
Section 504 VLI Home Rehabilitation Grants (Since FY 1950)	212,378	\$1,014,413,932
Section 514/516 Farm Labor Housing (Since FY 1962)	29,998	\$1,568,971,267
Section 515 Rental Housing (Since FY 1963)	533,473	\$15,898,474,097
Section 533 Housing Preservation Grants (Since FY 1986)*	88,601	\$394,183,681
Section 538 Guaranteed Rental Housing Loans (Since FY 1996)	45,361	\$2,244,124,233
Section 306-C WWD (Since FY 1993)	6,695	\$23,455,098
Totals	5,100,837	\$319,554,995,483

Programs Which Help Make Tenant Rent Affordable

Section 521 Rental Assistance (Since FY 1978)	3,517,677	\$24,376,039,862
Section 542 Mutli-Family Tenant Vouchers (Since FY 2006)	43,320	\$153,815,916
Totals	3,560,997	\$24,529,855,778

(a) Indicates units built or repaired.

(b) Total dollars obligated, not adjusted for inflation.

* FY 2018 Units for Section 533 HPG program not yet available)

Housing Assistance Council

This Page
Intentionally
Left Blank



SECTION 502 DIRECT HOMEOWNERSHIP LOANS, FY 1950 -- FY 2018

Year	Number of Units	Initial Loan Dollars */**	Total Dollars**
1950	3,691		\$16,941,528
1951	4,817		\$22,894,108
1952	3,835		\$20,038,527
1953	3,137		\$18,458,787
1954	2,688		\$16,059,729
1955			
1956	523		\$3,720,904
1957	3,163		\$21,290,884
1958	4,591		\$33,065,871
1959	7,693		\$60,674,466
1960	4,962		\$40,735,995
1961	8,198		\$70,341,121
1962	65,033		\$756,351,941
1963	19,014		\$186,192,346
1964	13,579		\$130,279,176
1965	14,381		\$130,235,417
1966	28,304		\$256,458,080
1967	43,973		\$427,527,854
1968	47,515		\$468,486,968
1969	46,512		\$480,421,834
1970	65,033		\$756,351,941
1971	103,824		\$1,362,275,872
1972	106,878		\$1,561,220,800
1973	109,183		\$1,735,688,490
1974	86,543		\$1,589,883,200
1975	94,589		\$1,926,643,300
1976	132,771		\$2,899,924,862
1977	107,441		\$2,567,015,270
1978	100,476		\$2,690,853,100
1979	93,400		\$2,854,440,670
1980	81,657		\$2,805,625,100
1981	69,362		\$2,577,882,360
1982	61,957		\$2,476,416,760
1983	51,920		\$2,137,125,930
1984	43,479		\$1,844,912,360
1985	40,814		\$1,789,930,270
1986	25,475		\$1,155,417,940
1987	24,085		\$1,144,420,730
1988	26,203		\$1,270,904,060
1989	25,264		\$1,266,863,330
1990	24,969		\$1,310,803,710
1991	23,122		\$1,269,674,290
1992	21,862		\$1,253,799,880
1993	22,340		\$1,291,307,530
1994	27,351		\$1,656,830,960
1995	15,351		\$931,335,950
1996	15,883		\$1,016,448,520
1997	11,403		\$706,404,350
1998	15,563		\$1,007,778,300
1999	14,531		\$966,910,110



SECTION 502 DIRECT HOMEOWNERSHIP LOANS, FY 1950 -- FY 2018

Year	Number of Units	Initial Loan Dollars */**	Total Dollars**
2000	16,493		\$1,140,938,091
2001	14,789	\$1,051,662,230	\$1,074,712,403
2002	14,013	\$1,066,094,020	\$1,080,636,610
2003	12,633	\$1,023,877,840	\$1,038,359,350
2004	14,643	\$1,337,395,929	\$1,351,660,052
2005	11,744	\$1,129,435,641	\$1,140,711,032
2006	11,865	\$1,199,449,268	\$1,210,413,227
2007	11,051	\$1,198,066,159	\$1,208,329,152
2008	9,831	\$1,130,248,293	\$1,138,776,122
(regular) 2009	9,878	\$1,181,437,646	\$1,188,734,908
(**ARRA) 2009	2,009	\$265,596,395	\$267,124,147
(regular) 2010	8,278	\$1,005,664,597	\$1,013,623,005
(**ARRA) 2010	9,074	\$1,125,475,407	\$1,131,243,605
2011	9,465	\$1,114,401,672	\$1,119,158,787
2012	7,918	\$895,154,034	\$899,997,704
2013	7,111	\$821,227,454	\$827,165,231
2014	6,560	\$802,564,925	\$808,100,708
2015	7,064	\$895,678,882	\$899,814,127
2016	7,089	\$955,693,238	\$958,259,532
2017	7,187	\$995,373,460	\$999,991,165
2018	7,199	\$1,097,089,820	\$1,100,796,382
Totals	2,174,232		\$74,583,810,821

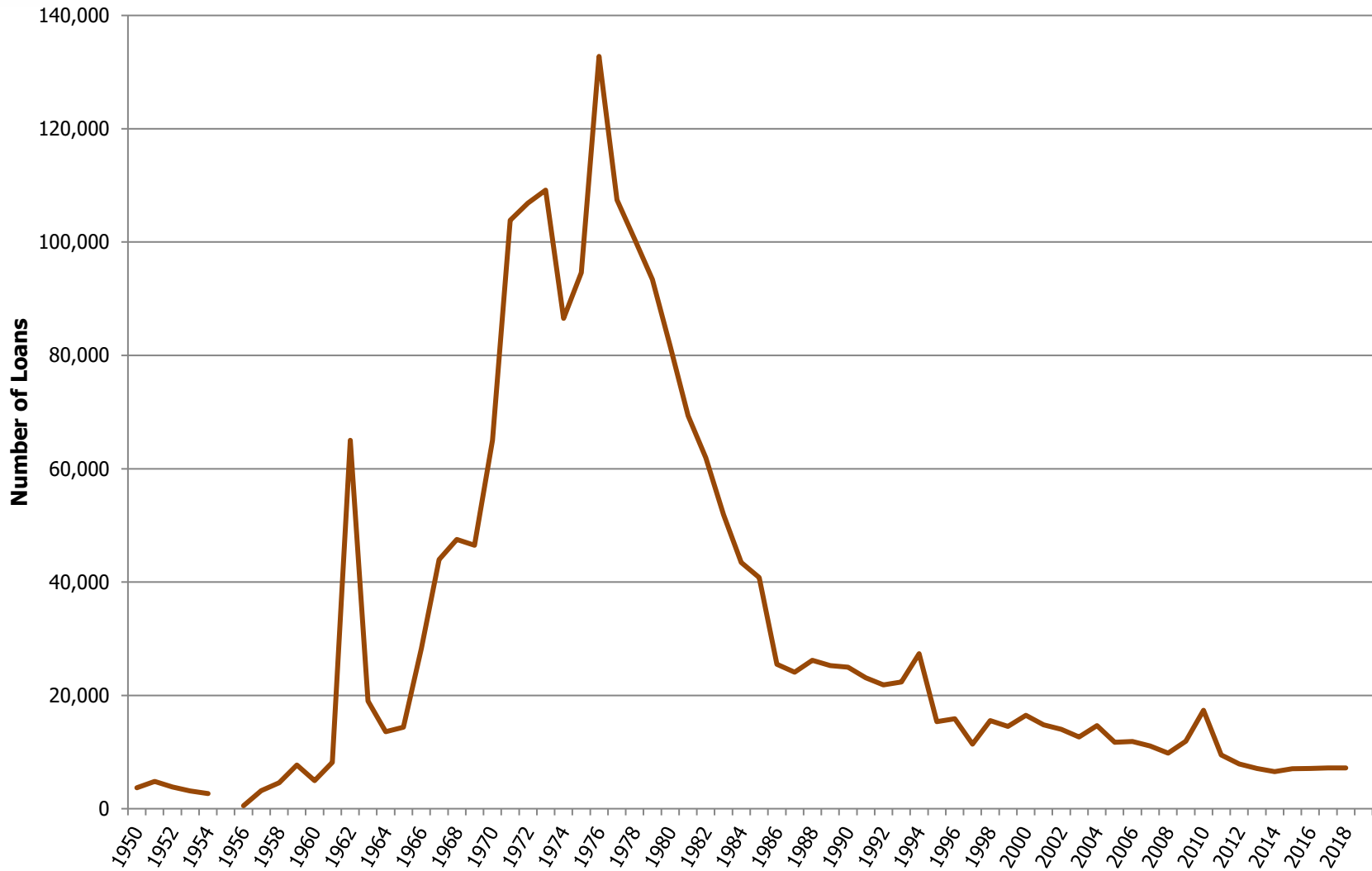
* Initial loan and grant dollar column added in FY 2001. These correspond to initial units.

** Dollars not adjusted for inflation.

*** Funded under the 2009 American Recovery & Reinvestment Act



USDA Section 502 Direct Homeownership Loans, FY 1950 -- FY 2018



Source: HAC Tabulations of RD Data

Note: FY 2009 and 2010 Include ARRA Funding

— Number of Loans



SECTION 502 GUARANTEED HOMEOWNERSHIP LOANS, FY 1977 - FY 2018

Year	Number of Units	Initial Loan Dollars */**	Total Dollars**
1977	74		\$1,726,100
1978			
1979	374		\$11,587,770
1980	590		\$18,865,770
1981	172		\$5,723,450
1991	660		\$38,400,700
1992	3,828		\$214,391,470
1993	8,901		\$539,836,190
1994	11,523		\$725,917,800
1995	16,580		\$1,048,757,640
1996	24,955		\$1,699,955,030
1997	29,161		\$1,999,941,080
1998	39,144		\$2,822,474,430
1999	39,566		\$2,976,977,550
2000	29,123		\$2,150,522,375
2001	29,326	\$2,299,112,840	\$2,341,577,420
2002	28,056	\$2,315,653,610	\$2,418,665,760
2003	31,508	\$2,824,226,280	\$3,086,740,470
2004	33,760	\$3,131,872,661	\$3,233,395,414
2005	30,871	\$2,955,892,374	\$3,045,473,402
2006	30,268	\$2,984,051,575	\$3,074,685,565
2007	34,318	\$3,553,491,945	\$3,663,597,113
2008	58,524	\$6,484,888,348	\$6,756,293,547
(regular) 2009	57,527	\$6,913,865,019	\$7,175,728,079
(***ARRA) 2009	73,348	\$9,039,510,700	\$8,557,497,577
(regular) 2010	123,033	N/A	\$15,542,973,135
(***ARRA) 2010	10,020	N/A	\$1,220,771,098
2011	120,763	\$15,252,933,639	\$16,858,927,513
2012	145,109	\$17,431,635,440	\$19,213,094,526
2013	162,943	\$19,654,612,281	\$22,350,462,183
2014	139,828	\$17,899,852,202	\$19,051,253,068
2015	134,255	\$17,537,831,093	\$18,623,217,944
2016	116,684	\$15,540,942,052	\$16,357,336,854
2017	134,071		\$19,279,916,900
2018	115,864	\$15,937,688,161	\$16,826,420,078
Totals	1,814,727		\$222,933,105,001

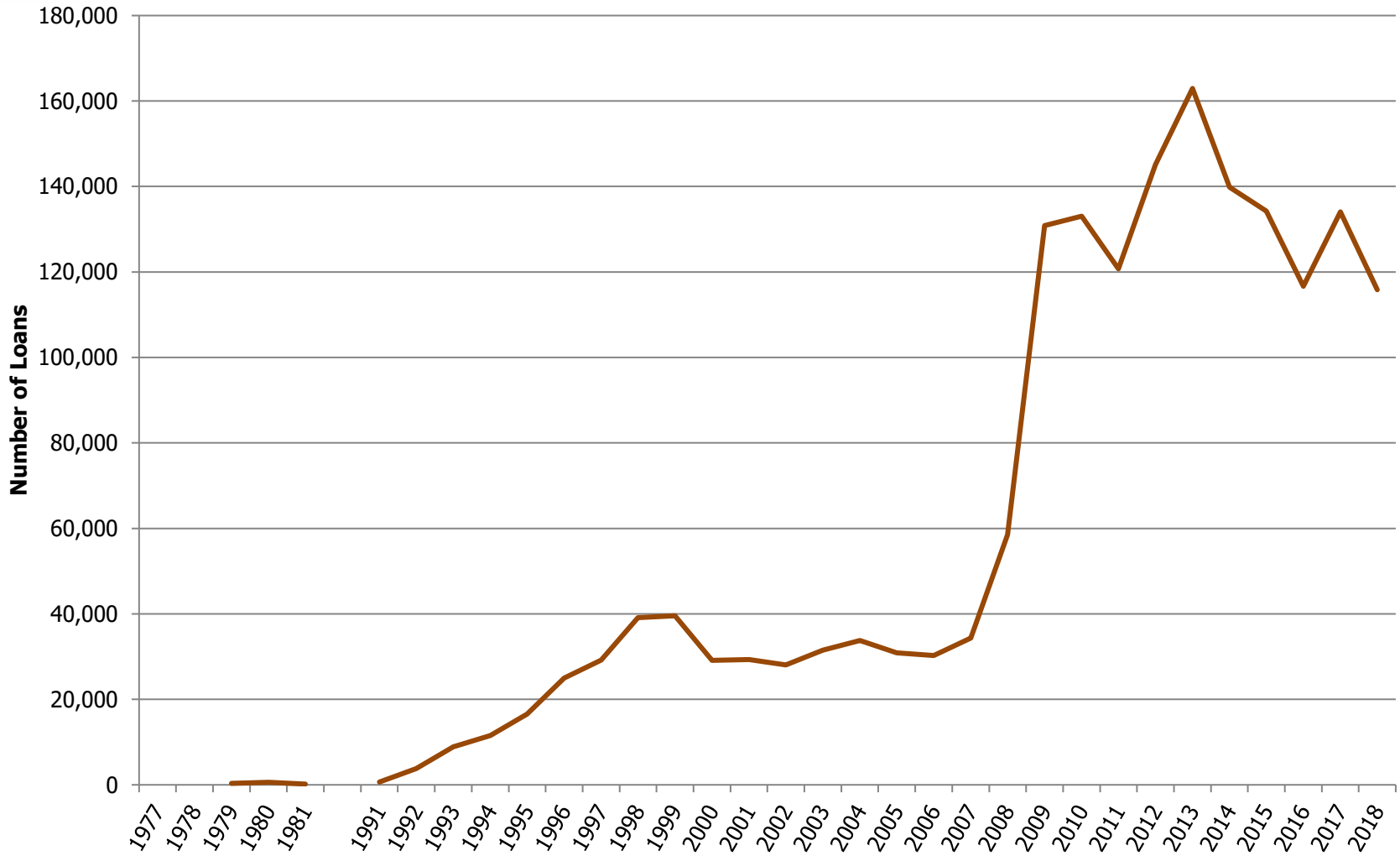
* Column added in FY2001. Initial loan dollars equate to units.

** Dollars not adjusted for inflation.

*** Funded under the 2009 American Recovery & Reinvestment Act



USDA Section 502 Guaranteed Homeownership Loans, FY 1977 - FY 2018



Source: HAC Tabulations of RD Data

Note: FY 2009 and 2010 Include ARRA Funding

— Number of Loans



SECTION 504 VERY LOW-INCOME HOME REPAIR PROGRAM, FY 1950 - FY 2018

Year	Loans		Grants	
	Number of Units*	Dollars **/**	Number of Units*	Dollars**/**
1950	70	\$65,630	203	\$89,566
1951	92	\$84,535	277	\$131,228
1952	88	\$72,530	191	\$90,365
1953	35	\$33,660	123	\$57,775
1962	36	\$17,260	145	\$69,390
1963	132	\$65,750	1,364	\$1,029,655
1964	215	\$138,810	5,789	\$4,805,435
1965	777	\$603,220	2,361	\$1,922,020
1966	2,604	\$2,162,031		
1967	2,906	\$2,604,915		
1968	4,455	\$4,818,030		
1969	5,048	\$5,799,110		
1970	4,390	\$5,244,590		
1971	4,364	\$5,492,080		
1972	3,219	\$5,399,275		
1973	2,596	\$4,567,782		
1974	2,185	\$4,429,729		
1975	2,099	\$4,808,570		
1976	3,115	\$8,288,660		
1977	3,028	\$7,885,690	1,882	\$4,999,820
1978	4,393	\$11,941,510	3,537	\$9,000,080
1979	5,213	\$14,710,250	6,407	\$18,999,990
1980	6,934	\$21,923,910	8,013	\$23,999,990
1981	5,296	\$17,870,830	7,014	\$22,743,320
1982	2,771	\$10,043,550	3,937	\$13,605,300
1983	1,993	\$7,075,910	3,670	\$12,499,930
1984	2,057	\$7,174,310	3,416	\$12,499,900
1985	2,315	\$7,896,610	3,464	\$12,498,670
1986	2,018	\$6,992,490	3,897	\$13,890,850
1987	1,707	\$5,851,550	3,403	\$12,498,390
1988	2,145	\$7,554,780	3,384	\$12,500,090
1989	3,041	\$11,263,760	3,430	\$12,500,450
1990	3,372	\$11,558,040	2,611	\$12,642,930
1991	2,557	\$11,195,590	3,385	\$12,743,040
1992	2,467	\$11,329,450	3,376	\$12,804,650
1993	2,627	\$11,842,790	3,670	\$14,278,780
1994	5,067	\$25,214,790	6,773	\$27,487,180
1995	5,444	\$29,475,660	6,964	\$27,821,590
1996	6,006	\$35,111,240	5,400	\$25,711,810
1997	4,726	\$30,881,910	3,492	\$17,570,360
1998	4,827	\$30,251,090	4,910	\$25,684,472
1999	4,021	\$25,472,079	4,087	\$21,313,810
2000	4,321	\$27,440,420	5,442	\$30,373,300
2001	4,720	\$30,761,910	5,924	\$33,695,450
2002	4,744	\$31,985,860	5,413	\$31,192,980
2003	4,602	\$32,104,660	5,750	\$33,720,920



SECTION 504 VERY LOW-INCOME HOME REPAIR PROGRAM, FY 1950 - FY 2018

Year	Loans		Grants	
	Number of Units*	Dollars **/**	Number of Units*	Dollars**/**
2004	4,856	\$33,573,996	5,493	\$32,410,636
2005	5,179	\$36,755,292	6,101	\$37,429,676
2006	5,114	\$35,859,513	6,889	\$47,018,174
2007	5,014	\$35,716,601	5,622	\$37,610,070
2008	4,272	\$29,918,139	5,464	\$37,137,521
2009	3,936	\$27,024,080	5,759	\$36,400,122
2010	3,974	\$26,152,362	5,536	\$35,203,938
2011	3,462	\$21,851,027	4,929	\$31,244,176
2012	1,615	\$9,998,400	5,131	\$30,305,811
2013	2,412	\$14,335,067	4,594	\$27,167,965
2014	2,372	\$13,805,594	4,670	\$28,289,384
2015	2,510	\$15,126,859	4,728	\$28,996,511
2016	3,162	\$17,406,894	5,010	\$30,659,518
2017	3,431	\$19,637,606	4,763	\$28,873,929
2018	3,225	\$19,789,117	4,585	\$28,193,015
Totals :	195,372	\$894,457,353	212,378	\$1,014,413,932

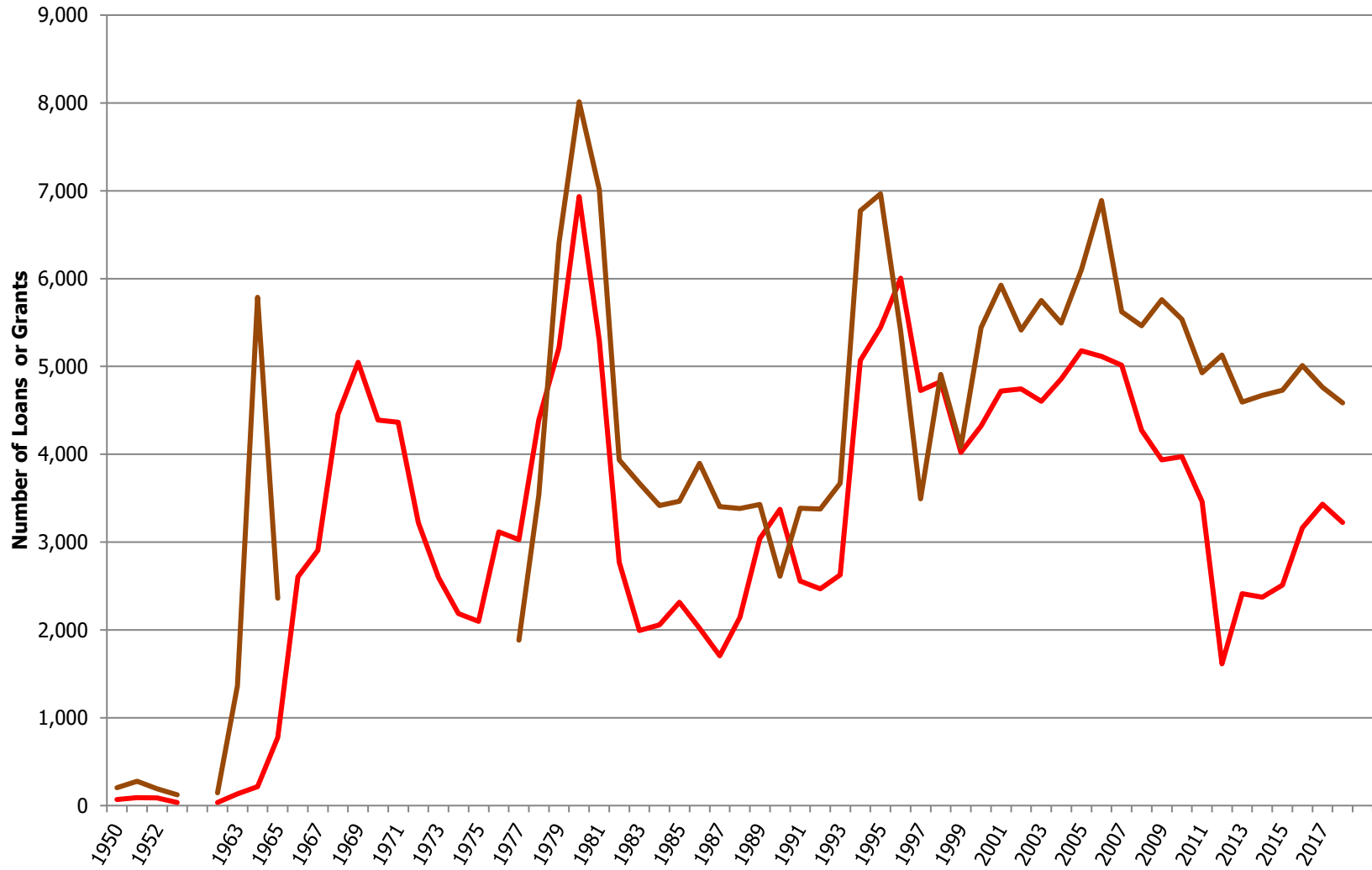
* Unit totals indicate initial loans or grants only.

** Total dollars include initial and supplemental loan & grants.

*** Dollars not adjusted for inflation



USDA Section 504 VLI Home Repair Program, FY 1950 - FY 2018



Source: HAC Tabulations of RD Data

— Number of Loans — Number of Grants



SECTION 514/516 FARM LABOR HOUSING LOANS/GRANTS, FY 1962 - FY 2018

Year	Number of Units*		Dollars**		Total
	Individuals	Family	514 Loans	516 Grants	
1962			\$52,500		\$52,500
1963			\$221,450		\$221,450
1964	617	130	\$884,300		\$884,300
1965	54	18	\$47,480		\$47,480
1966	2,789	870	\$3,465,840	\$2,156,320	\$5,622,160
1967	528	1,199	\$3,818,360	\$2,678,440	\$6,496,800
1968	147	1,118	\$4,494,620	\$2,700,290	\$7,194,910
1969	234	710	\$3,530,910	\$5,003,500	\$8,534,410
1970	74	266	\$1,549,660	\$2,133,770	\$3,683,430
1971	0	120	\$474,300	\$736,550	\$1,210,850
1972	72	713	\$2,693,080	\$6,683,180	\$9,376,260
1973	97	1,639	\$10,214,260	\$1,745,930	\$11,960,190
1974	17	1,734	\$10,000,000	\$10,080,730	\$20,080,730
1975	266	831	\$8,065,000	\$5,000,000	\$13,065,000
1976	10	1,108	\$10,115,920	\$10,729,570	\$20,845,490
1977	54	1,157	\$5,335,760	\$7,250,000	\$12,585,760
1978	104	408	\$9,998,390	\$7,750,000	\$17,748,390
1979	206	2,369	\$36,328,810	\$32,427,860	\$68,756,670
1980	120	1,370	\$24,576,970	\$22,279,100	\$46,856,070
1981	913		\$18,548,040	\$10,518,320	\$29,066,360
1982	565		\$1,910,600	\$14,948,400	\$16,859,000
1983	301		\$3,994,290	\$7,543,530	\$11,537,820
1984	775		\$5,484,870	\$9,807,080	\$15,291,950
1985	653		\$17,588,200	\$11,155,710	\$28,743,910
1986	731		\$10,675,120	\$10,849,720	\$21,524,840
1987	413		\$10,685,780	\$7,135,430	\$17,821,210
1988	421		\$11,372,380	\$11,221,300	\$22,593,680
1989	404		\$11,445,610	\$9,379,240	\$20,824,850
1990	170		\$11,287,160	\$10,751,090	\$22,038,250
1991	281		\$13,836,330	\$10,377,020	\$24,213,350
1992	574		\$15,942,440	\$13,518,767	\$29,461,207
1993	641		\$16,299,970	\$15,935,697	\$32,235,667
1994	807		\$15,676,370	\$40,584,711	\$56,261,081
1995	617		\$15,070,860	\$11,005,192	\$26,076,052
1996	399		\$14,981,881	\$9,988,520	\$24,970,401
1997	337		\$14,954,230	\$8,396,963	\$23,351,193
1998	419		\$14,600,100	\$10,019,947	\$24,620,047
1999	622		\$19,999,970	\$13,176,155	\$33,176,125
2000	818		\$28,790,533	\$19,293,861	\$48,084,394
2001	715		\$33,152,013	\$9,944,676	\$43,096,689
2002	808		\$47,321,652	\$14,461,761	\$61,783,413
2003	792		\$55,861,660	\$7,128,580	\$62,990,240
2004	578		\$24,082,662	\$6,794,791	\$30,877,453
2005	818		\$32,937,335	\$33,473,779	\$66,411,114
2006	268		\$19,915,933	\$25,941,291	\$45,857,224
2007	541		\$31,905,590	\$14,002,033	\$45,907,623



SECTION 514/516 FARM LABOR HOUSING LOANS/GRANTS, FY 1962 - FY 2018

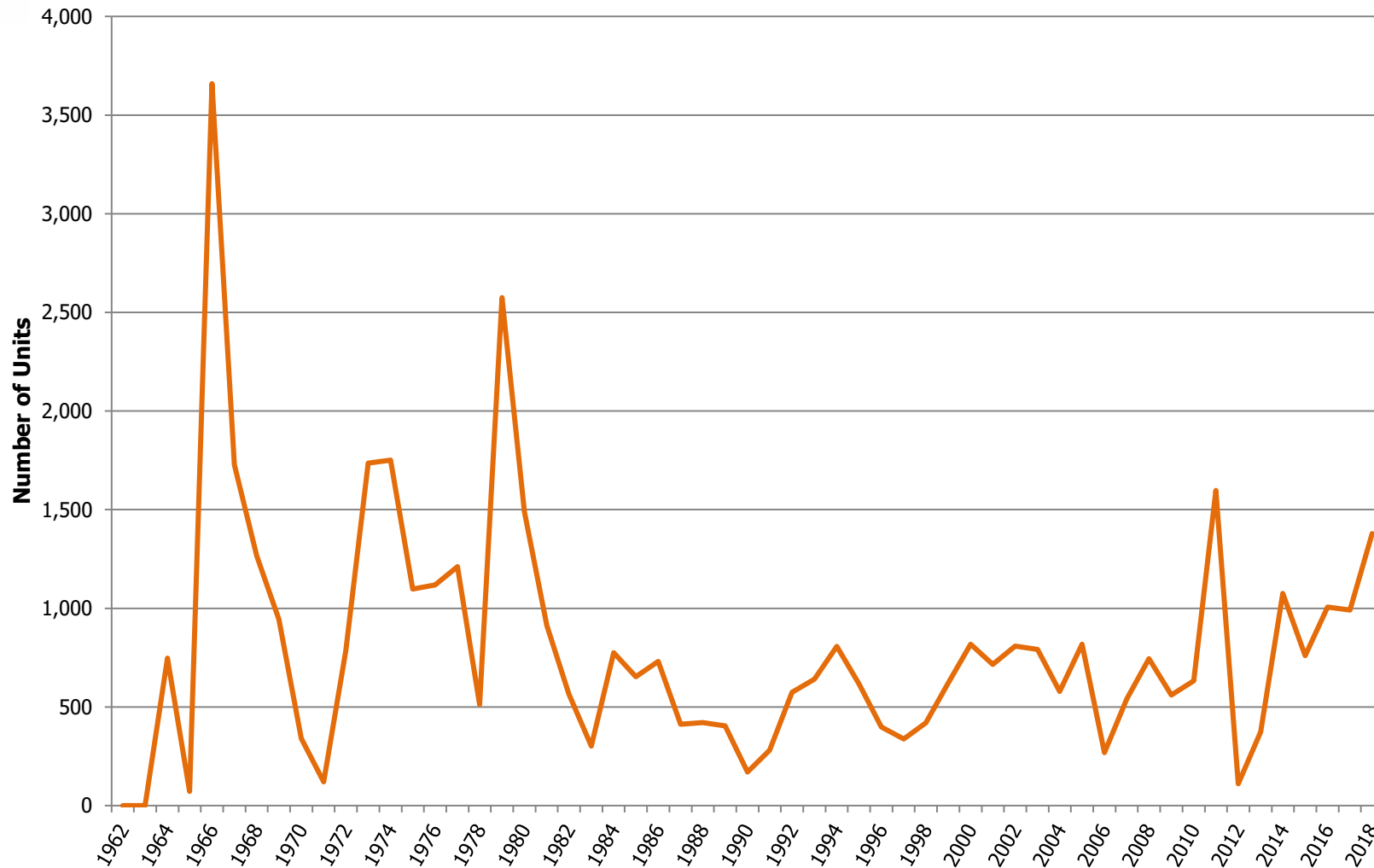
Year	Number of Units*		Dollars**		Total
	Individuals	Family	514 Loans	516 Grants	
2008	744		\$30,391,693	\$12,749,541	\$43,141,234
2009	560		\$34,529,669	\$14,955,440	\$49,485,109
2010	633		\$15,217,697	\$10,873,000	\$26,090,697
2011	1,597		\$40,498,023	\$15,675,895	\$56,173,918
2012	110		\$2,962,411	\$2,547,807	\$5,510,218
2013	373		\$18,880,633	\$8,840,682	\$27,721,315
2014	1,076		\$37,659,384	\$12,936,000	\$50,595,384
2015	760		\$19,340,442	\$6,426,274	\$25,766,716
2016	1,006		\$32,173,574	\$15,658,063	\$47,831,637
2017	991		\$34,889,604	\$8,198,220	\$43,087,824
2018	1,378		\$35,476,514	\$17,192,708	\$52,669,222
Totals :	29,998		\$956,208,833	\$612,762,434	\$1,568,971,267

* Unit totals include newly constructed units only

** Dollars not adjusted for inflation



USDA Section 514/516 Farm Labor Housing Loan/Grant Programs, FY 1962 - 2018



Source: HAC Tabulations of RD Data

— New Construction Units Financed



SECTION 515 RURAL RENTAL HOUSING PROGRAM, FY 1963 - FY 2018

	New Construction Loans *	New Construction Units *	Total Dollars **/***
1963	2	24	\$117,000
1964	22	192	\$1,166,000
1965	35	310	\$2,017,530
1966	81	578	\$4,307,170
1967	110	737	\$5,489,730
1968	297	1,627	\$13,175,000
1969	390	2,075	\$17,334,500
1970	510	2,995	\$28,440,740
1971	422	2,624	\$26,788,690
1972	515	3,868	\$40,117,880
1973	730	8,839	\$105,062,630
1974	879	12,590	\$173,314,030
1975	1,153	20,903	\$292,356,340
1976	1,539	30,175	\$499,983,000
1977	1,336	30,096	\$544,954,180
1978	1,466	35,511	\$675,944,550
1979	1,645	38,650	\$869,508,560
1980	1,539	33,100	\$881,336,140
1981	1,466	29,500	\$864,765,230
1982	1,428	30,616	\$953,667,720
1983	1,195	23,406	\$801,997,400
1984	1,264	29,772	\$919,002,010
1985	1,085	28,218	\$902,956,520
1986	921	21,252	\$652,347,650
1987	744	17,434	\$554,898,600
1988	722	16,489	\$554,934,070
1989	759	15,996	\$554,934,070
1990	761	16,063	\$571,903,340
1991	722	15,396	\$576,334,260
1992	755	14,798	\$573,899,440
1993	745	14,568	\$573,856,390
1994	715	11,542	\$512,393,440
1995	168	2,853	\$183,317,630
1996	144	1,913	\$151,009,240
1997	352	2,468	\$152,497,187
1998	344	2,520	\$149,352,849
1999	238	2,007	\$114,348,812
2000	274	1,576	\$113,790,706
2001	65	1,621	\$114,069,532
2002	82	2,080	\$118,381,784
2003	32	826	\$115,052,535
2004	40	902	\$115,857,375
2005	35	783	\$99,200,000
2006	21	486	\$99,000,000
2007	24	557	\$98,999,999
2008	23	805	\$69,927,000
2009	25	743	\$67,888,393
2010	21	626	\$68,130,133
2011	20	763	\$69,215,130



SECTION 515 RURAL RENTAL HOUSING PROGRAM, FY 1963 - FY 2018

	New Construction Loans *	New Construction Units *	Total Dollars **/**
2012	0	0	\$59,481,255
2013	0	0	\$29,134,660
2014	0	0	\$26,219,294
2015	0	0	\$28,290,335
2016	0	0	\$28,396,895
2017	0	0	\$34,999,894
2018	0	0	\$42,609,649
Totals	27,861	533,473	\$15,898,474,097

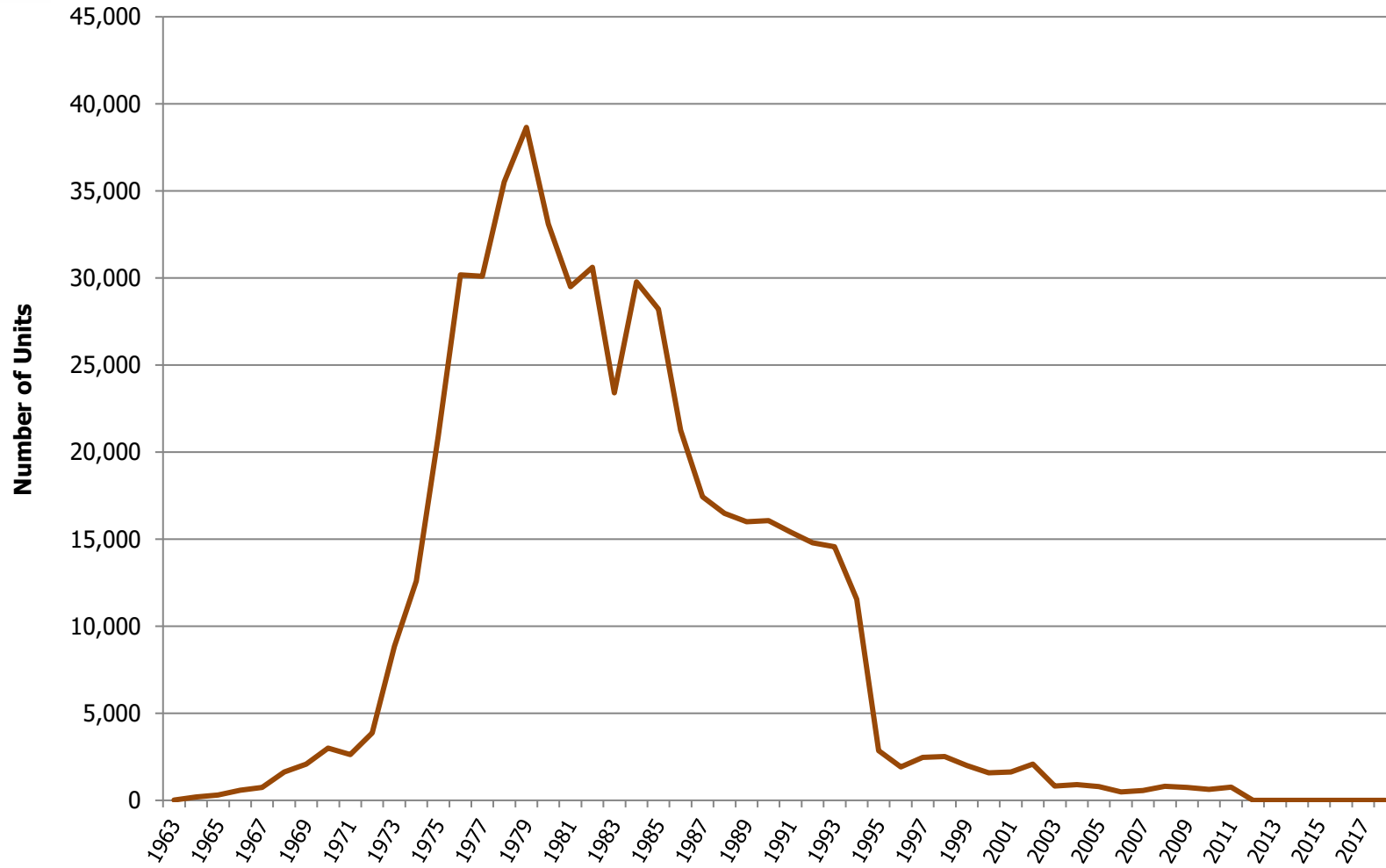
* Number of loans and units includes only new construction

** Total dollars includes new construction and repair loans

*** Dollars not adjusted for inflation



USDA Section 515 Rural Rental Housing Program, FY 1963 - FY 2018



Source: HAC Tabulations of RD Data

— New Construction
Units Funded



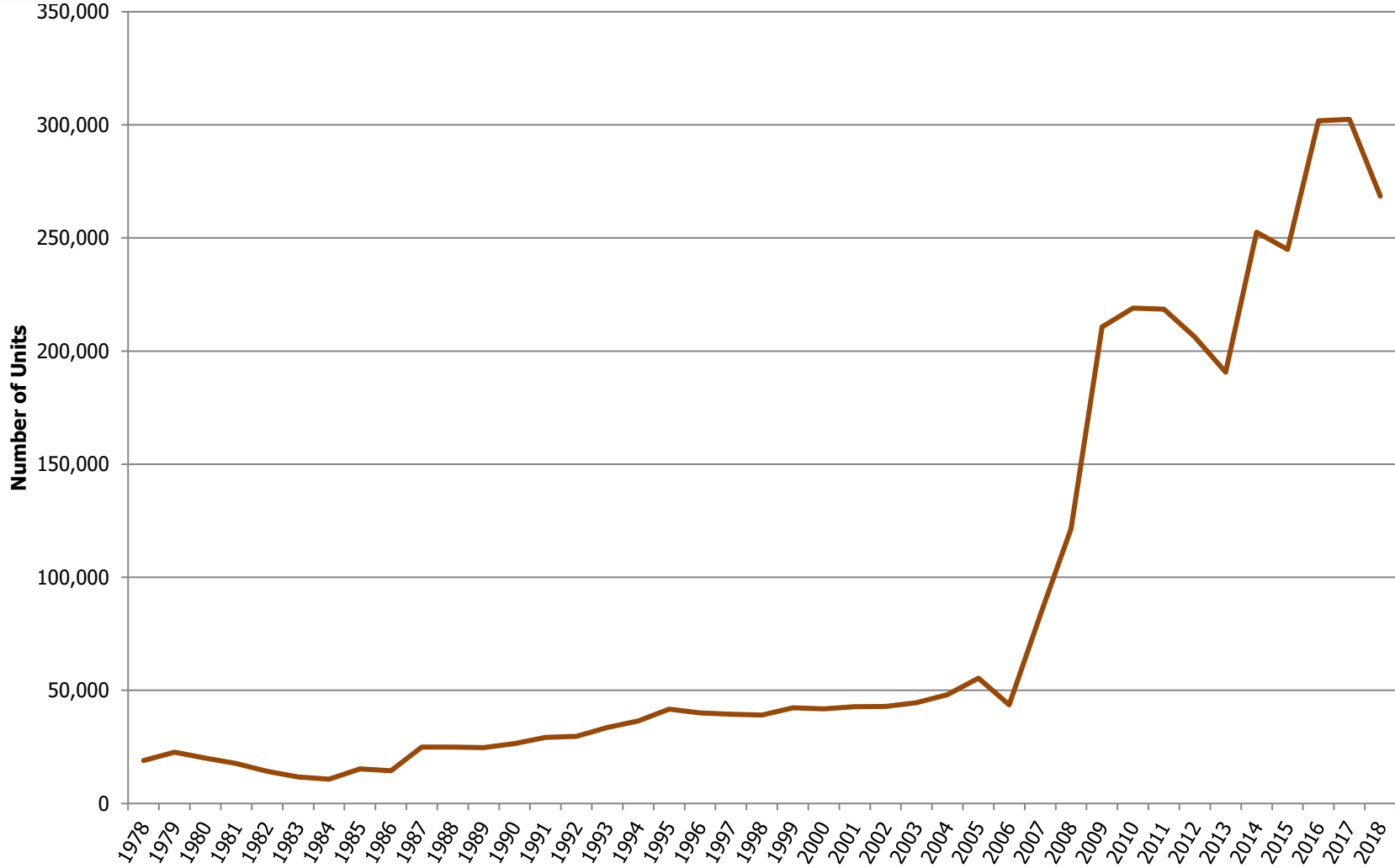
SECTION 521 RENTAL ASSISTANCE PROGRAM, FY 1978 - FY 2018

Fiscal Year	Units	Total Contract Dollars*
1978	18,975	\$348,843,295
1979	22,623	\$422,955,250
1980	20,000	\$392,990,000
1981	17,655	\$402,982,396
1982	14,280	\$397,997,880
1983	11,746	\$123,744,110
1984	10,750	\$110,994,250
1985	15,250	\$168,273,500
1986	14,511	\$160,303,000
1987	24,921	\$275,308,669
1988	24,921	\$275,302,287
1989	24,749	\$275,390,663
1990	26,467	\$296,353,258
1991	29,240	\$311,118,674
1992	29,735	\$319,846,353
1993	33,662	\$403,979,997
1994	36,477	\$446,673,582
1995	41,760	\$523,005,568
1996	40,012	\$540,490,871
1997	39,495	\$520,211,292
1998	39,044	\$541,396,971
1999	42,357	\$583,396,979
2000	41,807	\$639,642,660
2001	42,745	\$685,739,204
2002	42,868	\$701,003,994
2003	44,512	\$723,650,680
2004	48,080	\$580,560,690
2005	55,428	\$587,263,968
2006	43,597	\$646,570,837
2007	83,111	\$616,020,000
2008	121,568	\$478,815,366
2009	210,618	\$902,496,468
2010	219,037	\$978,779,659
2011	218,494	\$953,709,786
2012	206,217	\$904,652,994
2013	190,697	\$837,053,728
2014	252,512	\$1,109,999,994
2015	244,999	\$1,088,499,995
2016	301,792	\$1,389,694,998
2017	302,451	\$1,365,032,996
2018	268,514	\$1,345,293,000
Totals	3,517,677	\$24,376,039,862

* Dollars not adjusted for inflation



USDA Section 521 Rental Assistance Program, FY 1978 - FY 2018



Source: HAC Tabulations of RD Data

Rental Assistance
Units



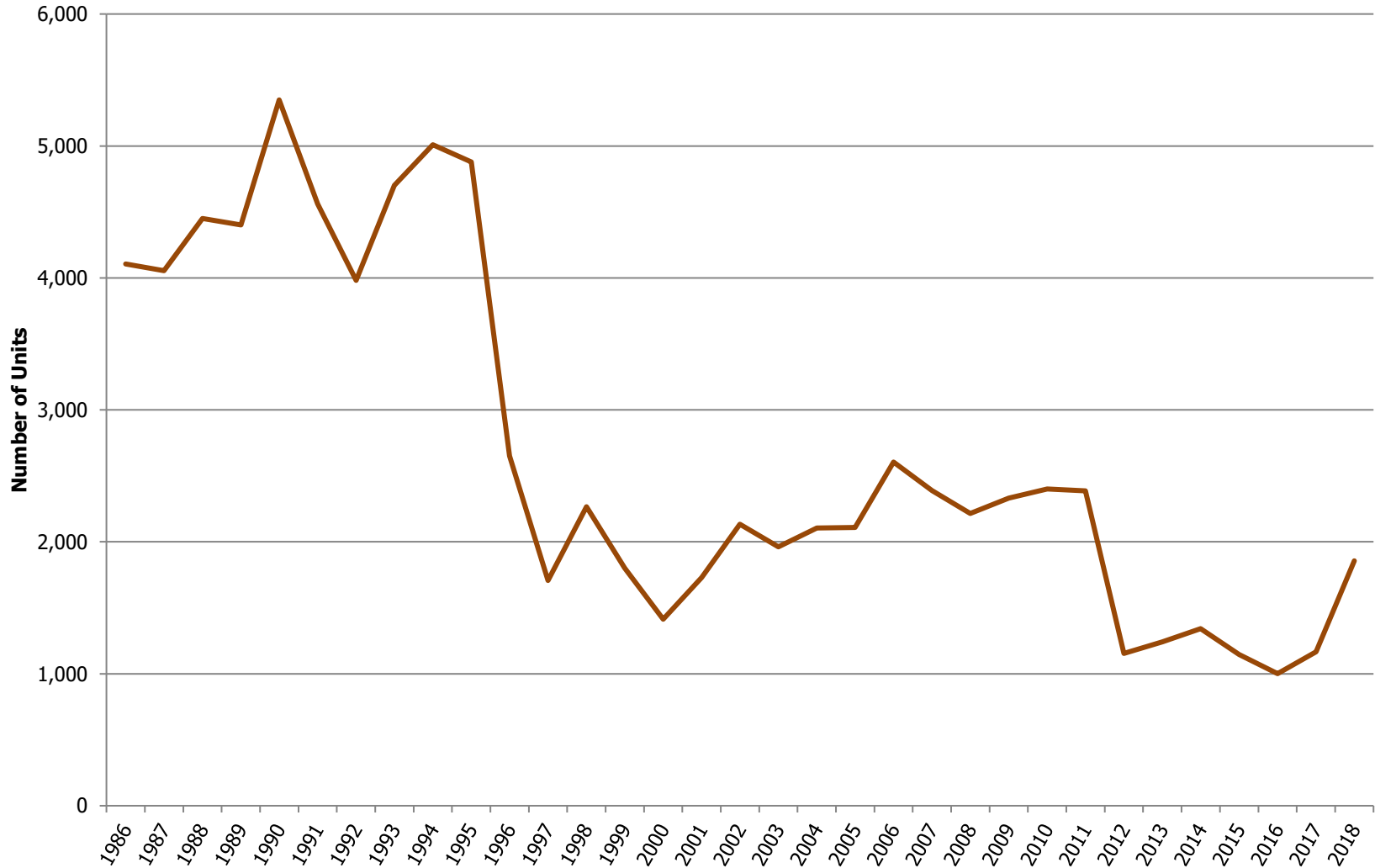
SECTION 533 HOUSING PRESERVATION GRANT PROGRAM, FY 1986 - FY 2018

Year	Grants	Units Assisted	Dollars*
1986	128	4,106	\$19,140,000
1987	155	4,055	\$19,140,000
1988	156	4,450	\$19,140,000
1989	156	4,401	\$19,140,000
1990	160	5,349	\$19,140,000
1991	193	4,560	\$22,999,700
1992	190	3,981	\$23,000,000
1993	197	4,702	\$22,999,970
1994	203	5,009	\$23,000,000
1995	207	4,878	\$21,999,990
1996	160	2,651	\$10,999,920
1997	138	1,707	\$7,586,705
1998	165	2,265	\$11,059,998
1999	127	1,801	\$7,167,610
2000	114	1,414	\$5,465,080
2001	119	1,729	\$7,415,860
2002	197	2,133	\$8,614,966
2003	146	1,963	\$10,092,260
2004	145	2,105	\$9,292,387
2005	164	2,108	\$8,583,648
2006	175	2,605	\$10,782,217
2007	163	2,388	\$10,209,904
2008	159	2,215	\$9,593,704
2009	154	2,332	\$10,088,166
2010	165	2,401	\$10,146,815
2011	155	2,386	\$10,129,063
2012	110	1,155	\$4,601,034
2013	96	1,241	\$4,086,220
2014	107	1,341	\$4,807,569
2015	113	1,147	\$4,256,380
2016	108	1,001	\$3,871,197
2017	107	1,167	\$4,869,238
2018	143	1,855	\$10,764,080
Totals	4,975	88,601	\$394,183,681

* Dollars not adjusted for inflation



USDA Section 533 Housing Preservation Grant Program, FY 1986 - FY 2018



Source: HAC Tabulations of RD Data

— Units Assisted



SECTION 538 GUARANTEED RENTAL HOUSING PROGRAM, FY 1996 - FY 2018

Year	Number of Loans*	Number of Units*	Amount Guaranteed**/***	Total Development Cost**
1996	10	450	\$16,180,642	\$23,717,566
1997	18	813	\$28,127,520	\$51,755,984
1998	57	1,110	\$39,687,337	\$78,677,258
1999	51	2,540	\$74,817,095	\$191,462,934
2000	52	2,970	\$99,660,030	\$222,622,312
2001	1	84	\$1,197,600	\$6,558,770
2002	45	2,745	\$109,840,463	\$219,066,685
2003	42	2,581	\$101,751,687	\$230,879,273
2004	44	2,611	\$99,399,928	\$243,166,505
2005	56	2,878	\$99,199,000	\$437,614,713
2006	61	2,884	\$99,000,000	\$419,815,669
2007	58	2,525	\$92,106,175	\$487,171,773
2008	63	2,853	\$132,381,409	\$666,294,615
2009	47	2,248	\$132,614,564	\$740,519,798
2010	40	2,163	\$129,707,606	\$693,975,431
2011	12	529	\$32,352,940	N/A
2012	24	1,364	\$104,255,495	N/A
2013	39	1,267	\$52,226,602	\$336,226,240
2014	98	2,113	\$136,162,031	\$604,904,349
2015	89	1,427	\$113,912,328	N/A
2016	119	3,037	\$186,935,103	N/A
2017	106	2,861	\$176,969,693	N/A
2018	27	1,308	\$185,638,985	N/A
Totals	1159	45,361	\$2,244,124,233	

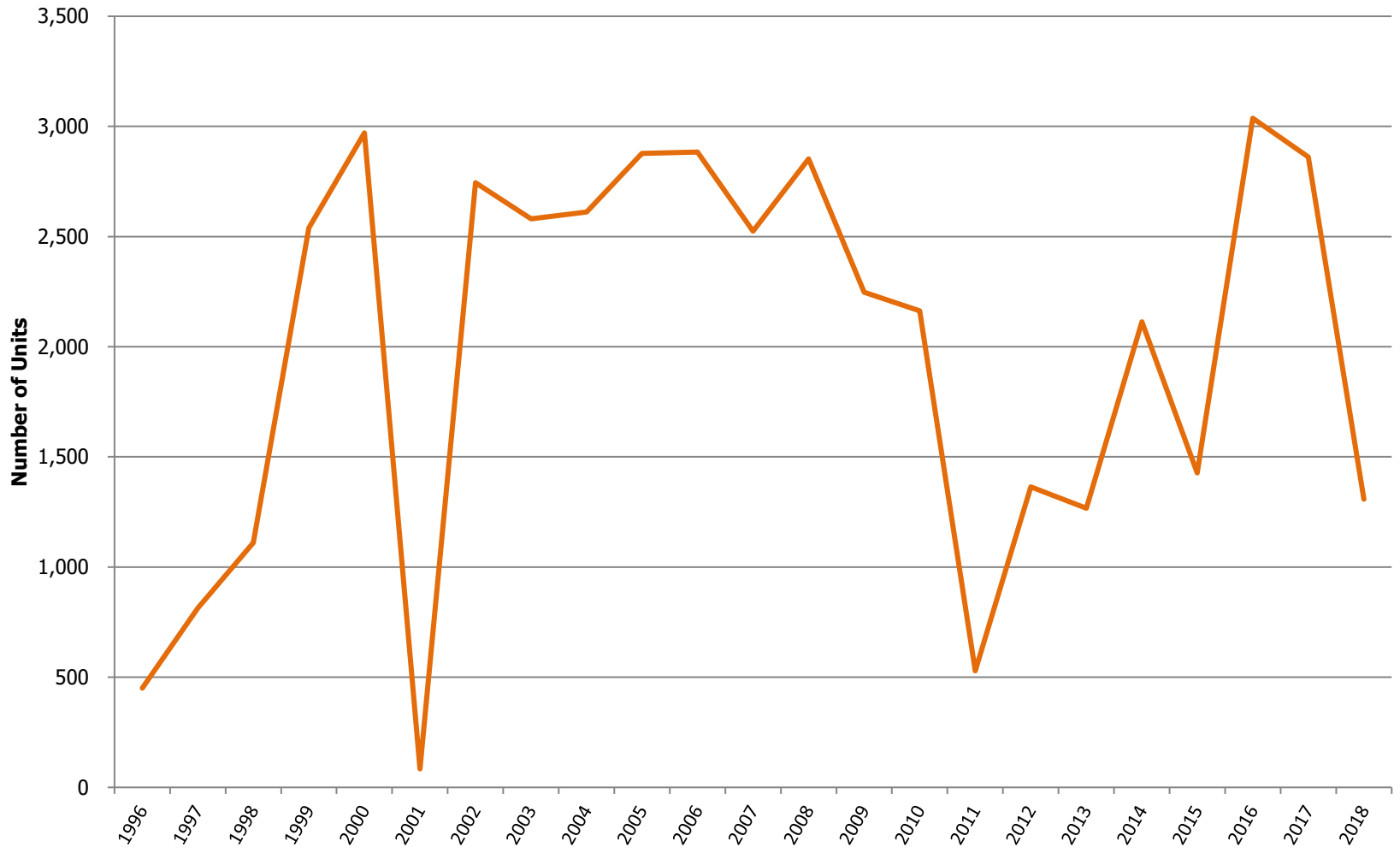
* Loan and unit figures for new construction only

** Dollar figures not adjusted for inflation

*** Amount Guaranteed includes new construction and repair /rehabilitation



USDA Section 538 Guaranteed Rental Housing Program, FY 1996 - 2018



Source: HAC Tabulations of RD Data

— New Construction Units Financed



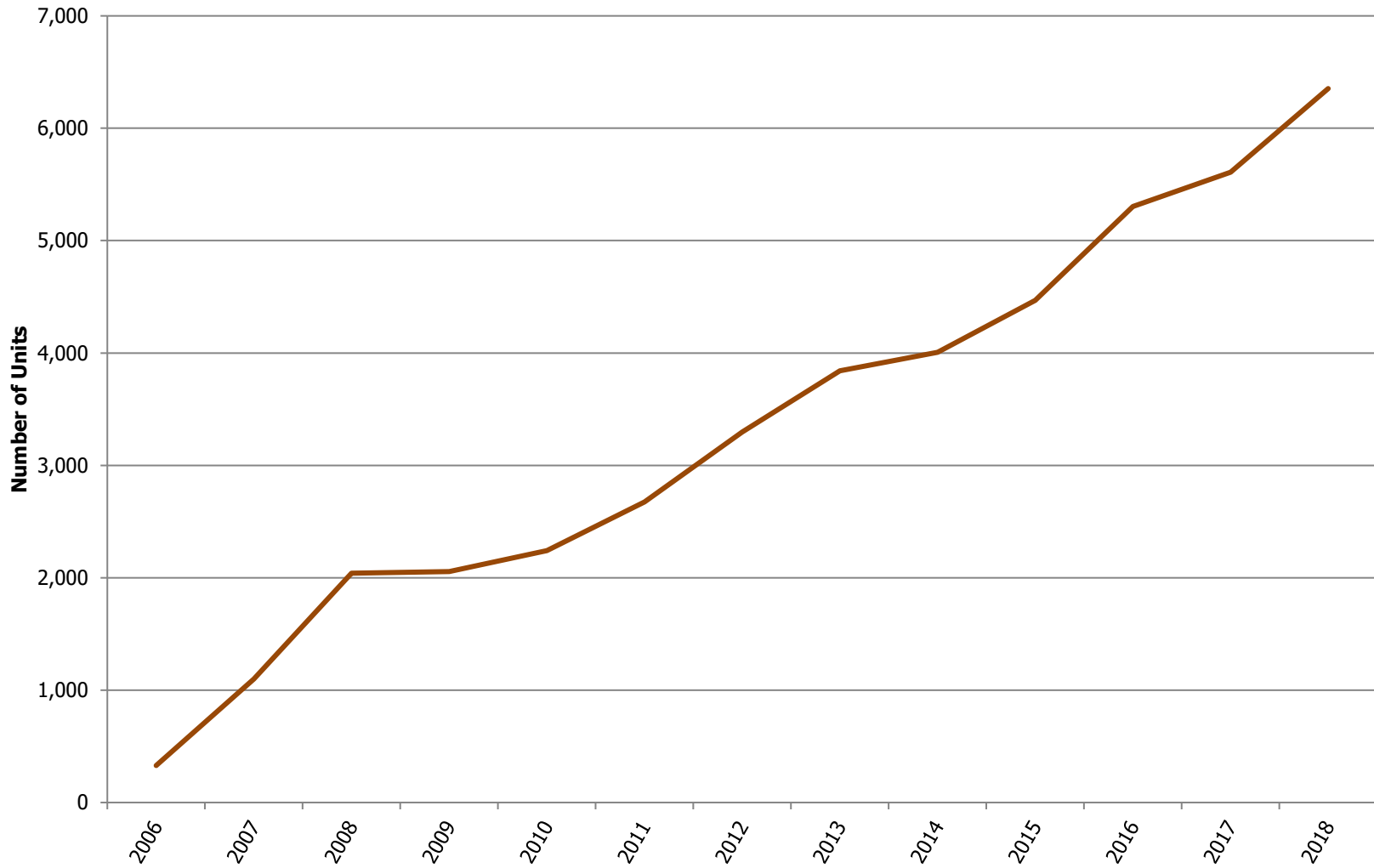
SECTION 542 MULTI-FAMILY HOUSING TENANT VOUCHERS, FY 2006 - FY 2018

Fiscal Year	Units	Total Dollars*
2006	329	\$638,449
2007	1,098	\$2,974,819
2008	2,041	\$6,317,497
2009	2,055	\$6,438,250
2010	2,242	\$7,289,439
2011	2,674	\$8,576,014
2012	3,298	\$10,509,436
2013	3,842	\$13,192,485
2014	4,007	\$14,093,211
2015	4,469	\$15,637,700
2016	5,303	\$19,467,451
2017	5,609	\$22,001,967
2018	6,353	\$26,679,198
Total	43,320	\$153,815,916

* Dollars not adjusted for inflation



USDA Section 542 Multi-Family Housing Tenant Voucher Program, FY 1978 - FY 2018



Source: HAC Tabulations of RD Data

Units